



Photo of the Year by Jack Flint

This Month - Jeremy Holmes

Newsletter Jan 2014



Fine art Nashville, TN, photographer, Jeremy Holmes. Jeremy Holmes seeks to share captured images in much the same way that writers, painters, poets and musicians seek to evoke feelings and reactions through their respective media.

I will be speaking on a few subjects but most of my talks tend to be on the storm photography side as that's what most people find most interesting. I will also speak on infrared photography and my abandon car photography.

I'm sure I won't get to cover everything in an hour but I will come prepared to talk and show as much as I can in an hour. I tend to let the crowd kind of lead my talks and spend more time on what everyone seems most interested in.

Club meeting
6:45 PM Tuesday
Jan 21, 2014
Social at 6 PM
Guests welcome
First meeting free.

Club Website
www.nashvillephotographyclub.com

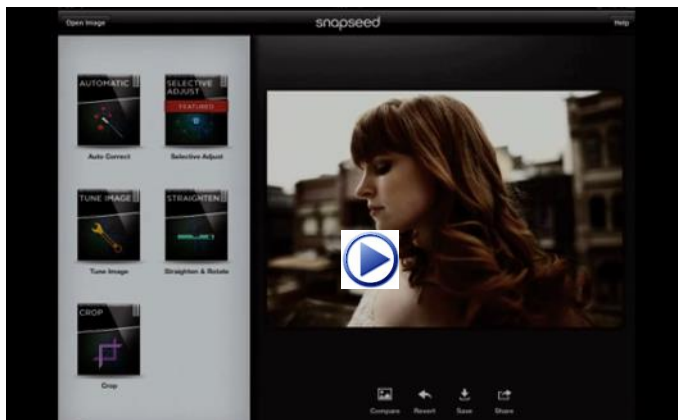
Quote
"I think a photography class should be a requirement in all educational programs because it makes you see the world rather than just look at it."
Unknown

Beginner Tips Basics Photography

Snapseed

App for Android and iPad

Easy edit Photos you take with your Android or I device for Free



Inside this issue

Picture of the Month	2
Schedule of Future Speakers	3
Map to Dury's	4
Take Photos with Your Phone	5
Contract Maker APP	6
Ice Light Review	7
Events and Outings	8

Try this free PDF reader which I find to be much better than Adobe's [Nitro Free PDF Reader](#)



Photo of the Month



Fall

Bob Ellis

Rules for Photo of the Month Contest -

1. You **MUST** be a member and dues paid up to date.
2. Photograph must pertain to the Monthly Theme (i.e. November is FOLIAGE).
3. Image size limits: Minimum 4 x 6 to Maximum 12" (long side).
4. Place ONE photo in the Marked Folder on the center table.
5. Photograph needs to be taken within the past 3 months.

Note: Be sure and put your name on the back of your image.



NASHVILLE PHOTOGRAPHY CLUB Schedule of Speakers

<i>Meeting Date</i>	<i>Speaker</i>	<i>Topic</i>	<i>Photo Theme</i>
January	Jeremy Holmes	Storm Chaser	Silence
February	Christian Sperka	Wildlife	Panning Motion
March	Kyle Dreier	Food and Architecture	Accidental Faces
April	Elizabeth Thompson	Newborn and Maternity	Reflection
May	Jennifer King	Nature/Landscape	Orange

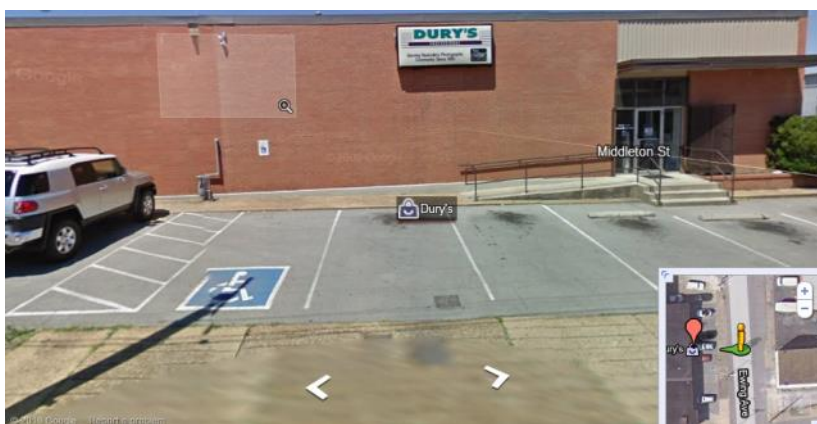
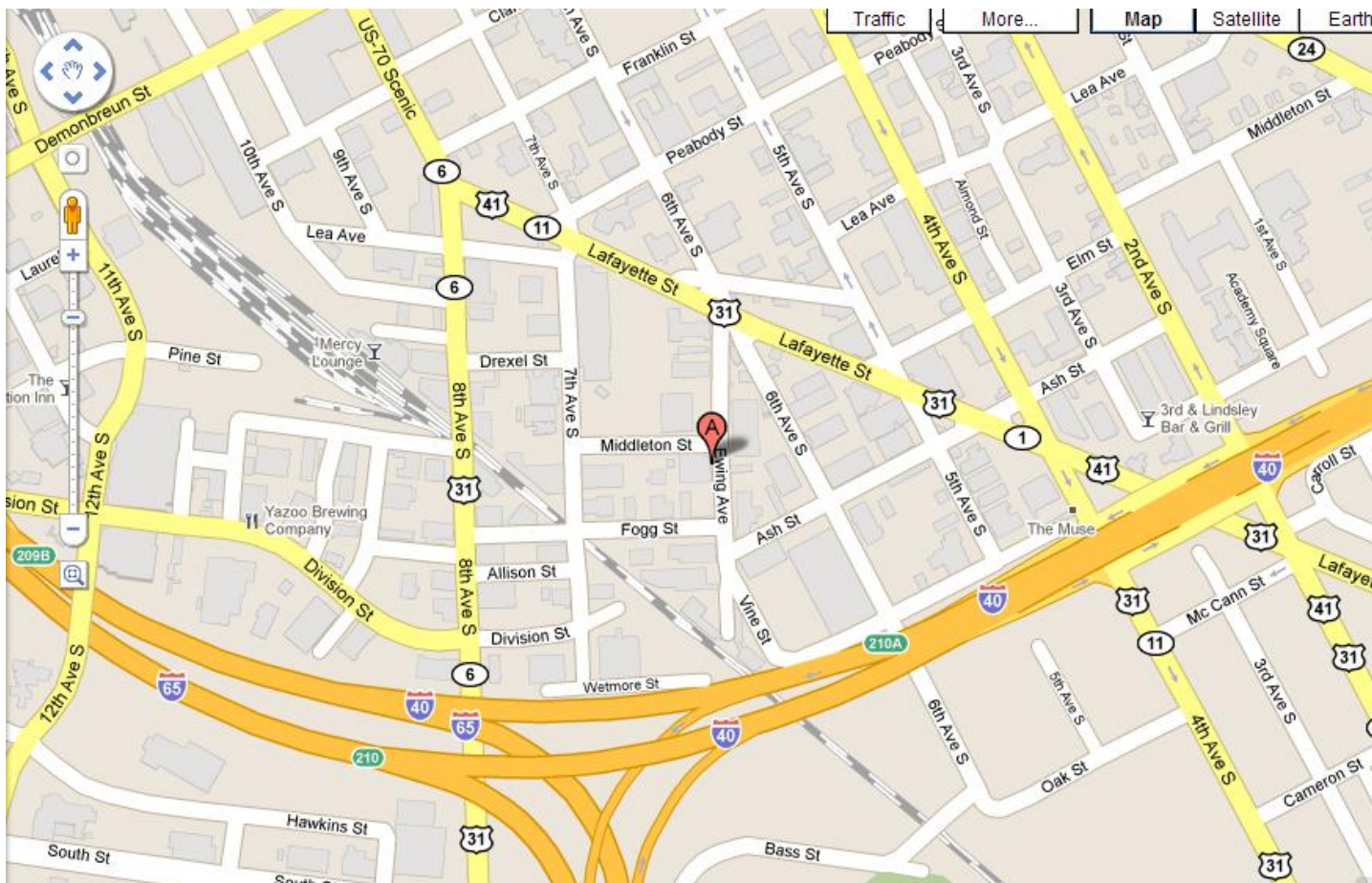
There are slots open for Member Spotlights for the rest of 2014. The Member Spotlight was designed to allow club members to share their work and learn more about each other. So far we have seen some amazing and wonderful work plus heard several entertaining and informative bio's.

How many of these do you have on your Phone? (2.5 minutes)



Meeting at Dury's 3rd Tuesday of the month.

Dury's is located at 701 Ewing Ave, Nashville, TN
(They are a long time sponsor of our club and we appreciate their contribution)



Take Portraits with you Phone or Tablet?



[iPhone and Android Phone or Tablet Photos](#)
[14 min video very well done worth the time](#)



Photographers Contract Maker
For I Devices and Android Devices



Contract Maker

App to make a PDF contacts on the spot (6 min)



Ice Light Review



[Click here to watch 5 min video](#)

A new constant on light with up to 5 hours of battery life. The intensity of the light is variable. Cost around \$500.00 made by Westcott.



Events and Outings

March 1,2 Saturday/Sunday Reelfoot Lake Eagles and Cypress Tree walk

When: March 1, starting between 8:00AM - 10:00AM

Where: Reelfoot Lake Visitor Center, Tiptonville, Tn off route 21/22

It takes about 4 hours to drive to the Reelfoot Visitor Center in Tiptonville, Tn. Brent and I are going up Friday night, and spend Saturday night there also. We plan to meet at the visitor center and pick up one of the tour buses that take visitors to various nest sites. Tours are \$5.00 per person. These buses are old school buses, and can hold about 35 people. There will be others not in our group on these buses. Another option we are looking into is to reserve a smaller van that can hold up to 15 people. The ranger told me that if we could get about 15 people to attend, we would be able to dictate how long to stay at any given site. In order to take advantage of this, we need to have as many people as possible to commit to this trip as soon as possible. We can then attempt to reserve the smaller van (same \$5.00 per person).

There are no chain hotel/motels close by. The nearest city with chain hotels is Union City, about 45 minutes from the visitors center. There are many small independent motels and resorts scattered around the lake; I am familiar with none of them. However, I am staying at the Cypress Point Resort, which is within a mile of the visitors center, and there is a full service restaurant nearby. Below, is a partial list of places to stay around the lake:

Cypress Point Resort:

<http://www.cypresspointresort.com/index.htm>

3535 State Rt. 21E
Tiptonville, TN 38079
731-253-6654
1-800-394-1886

Blue Bank Resort:

<http://www.bluebankresort.com/>

813 Lake Dr Hornbeak, TN 38232
1-877-258-3226

Upper Lake Blue Basin B&B

<http://blbweb.bluebasin.com/pages/tours.html>

100 Blue Basin Rd
Tiptonville, TN 38079
(731) 253-9064

Additional lodging information: <http://reelfoottourism.com/reelfootlake/lodging/>